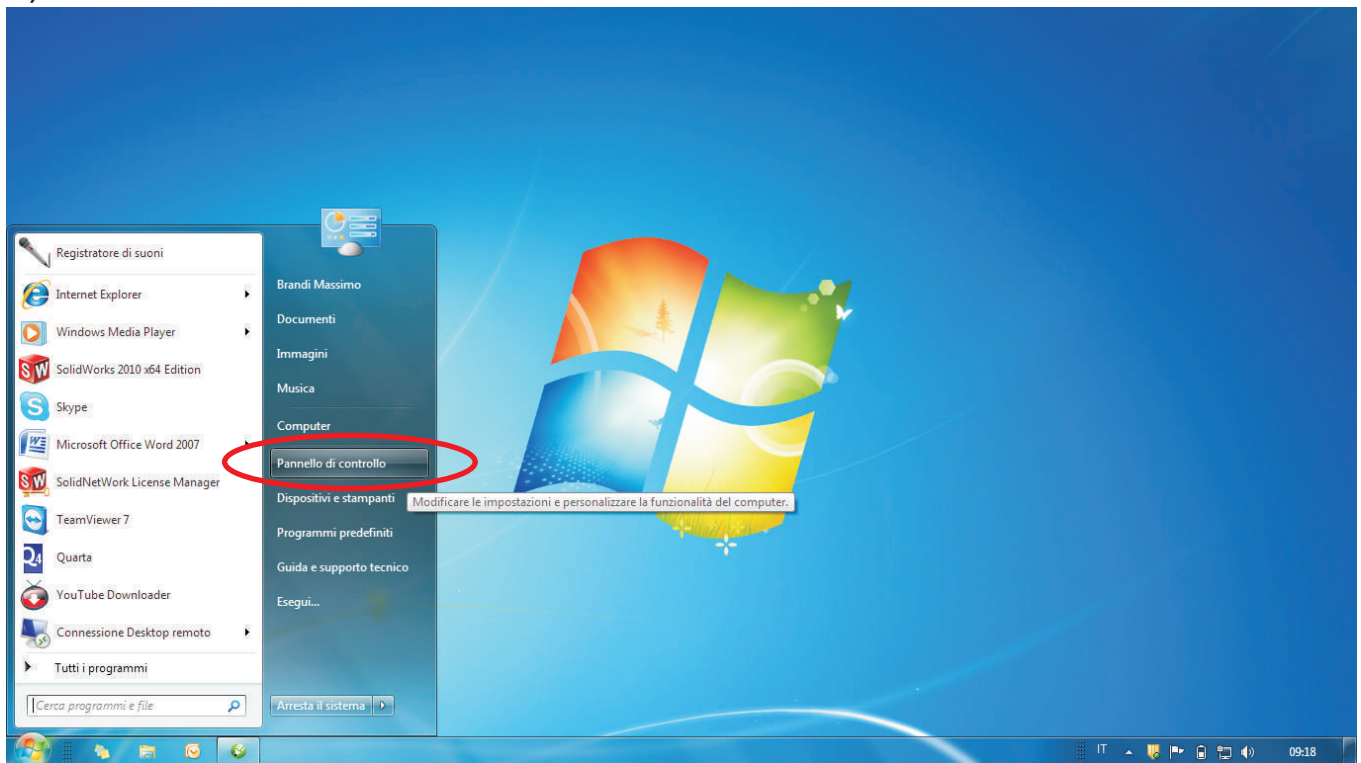
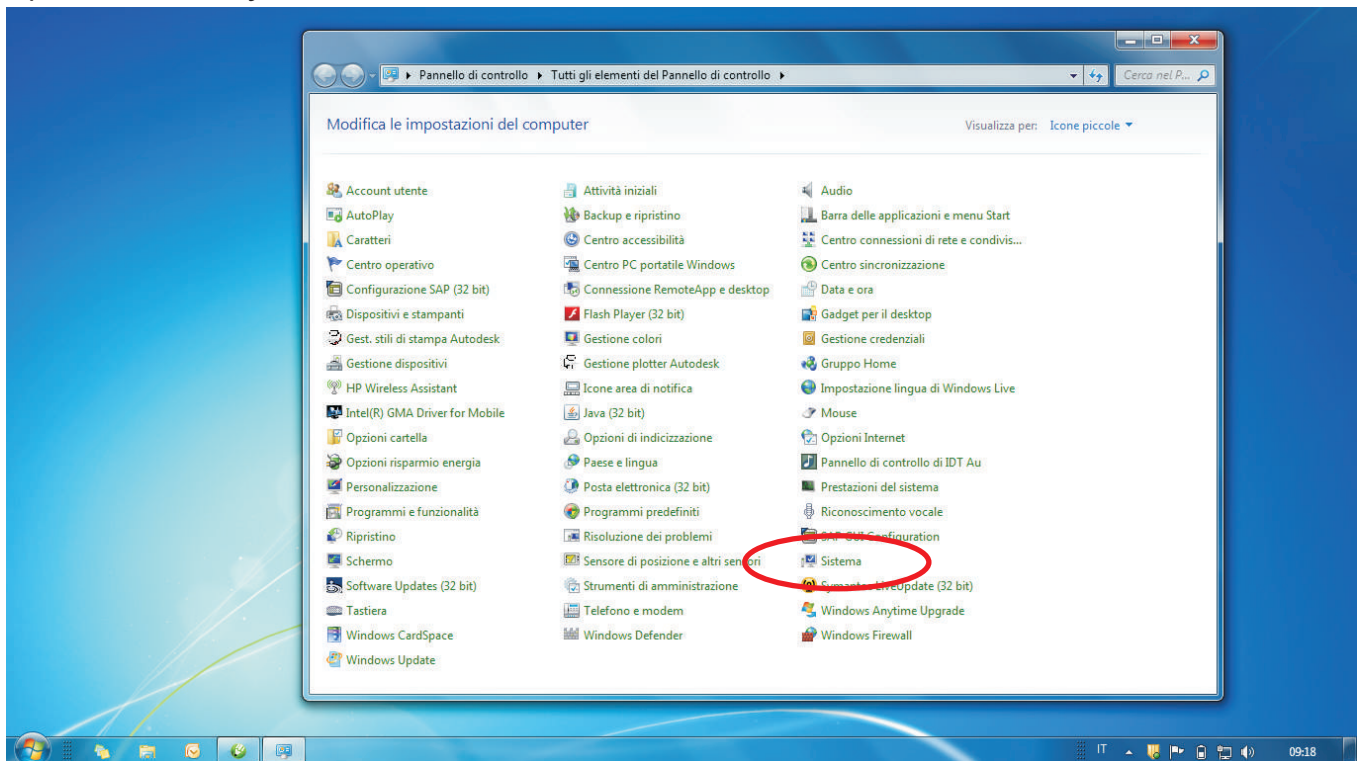


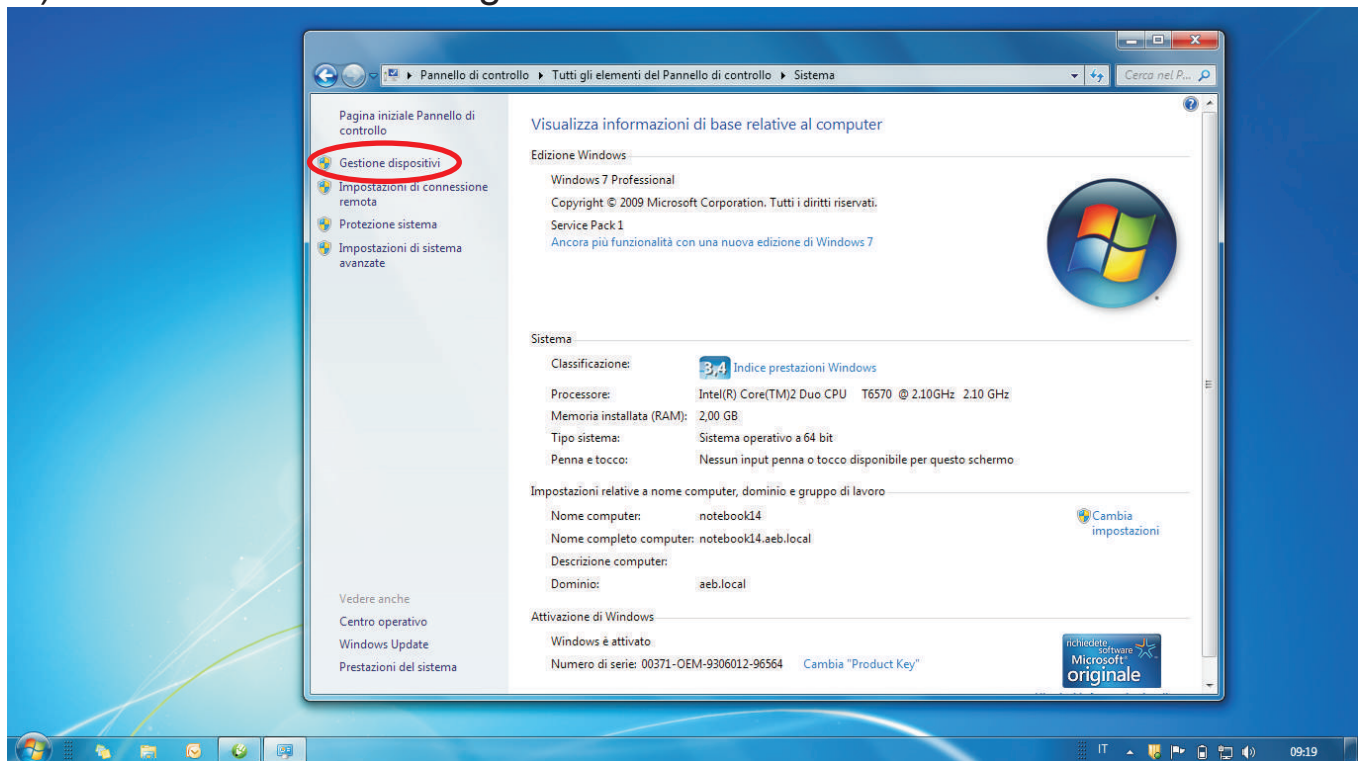
1) Connect the ACQ222 to the PC and click on Start -> Control Pannel



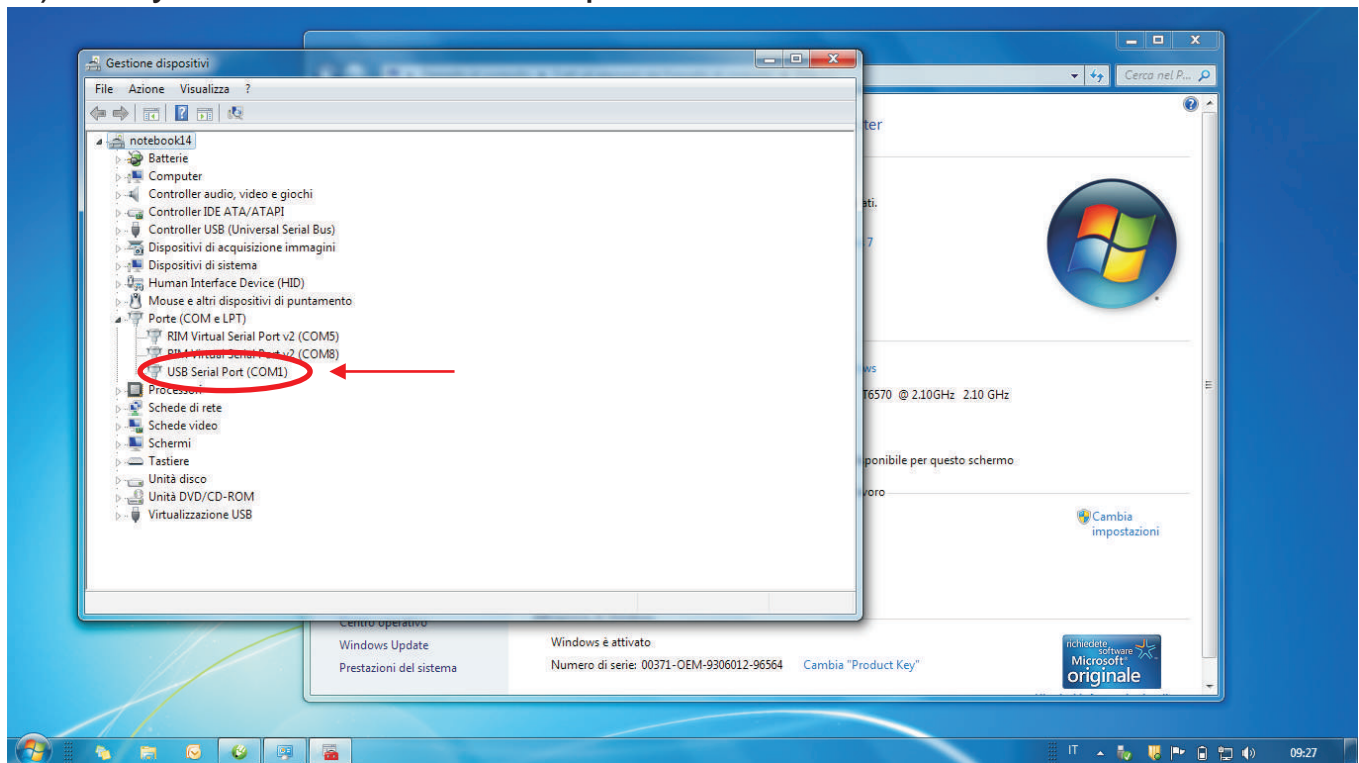
2) Click on System



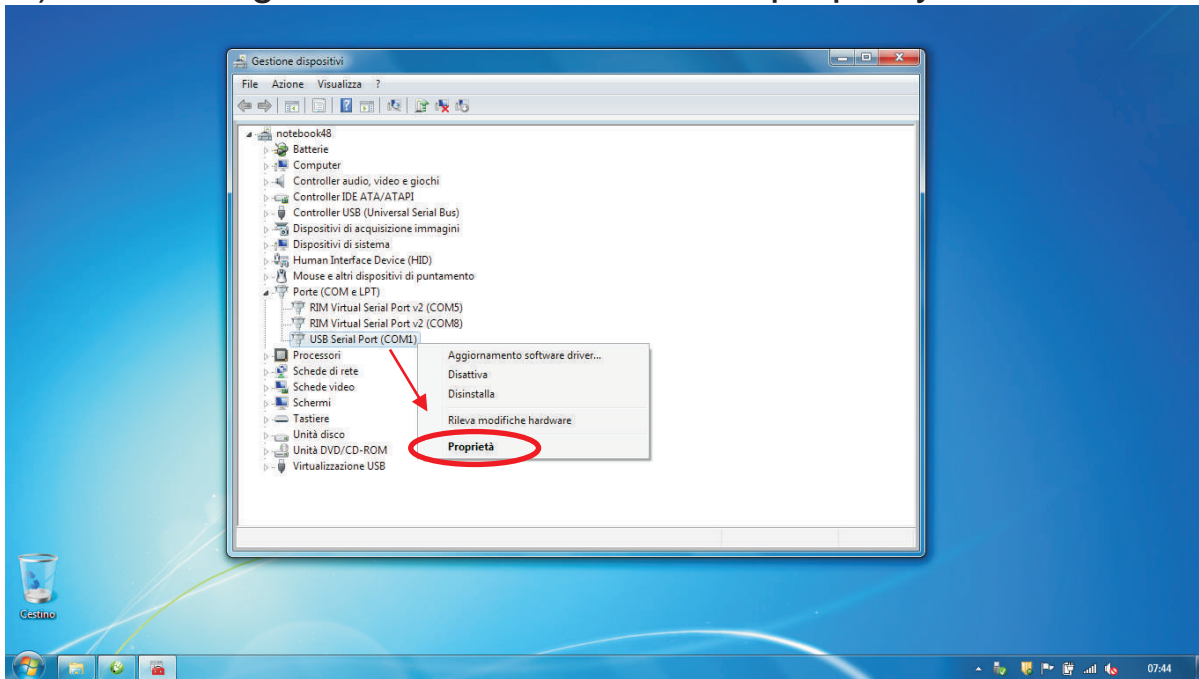
3) Click on Device Manager



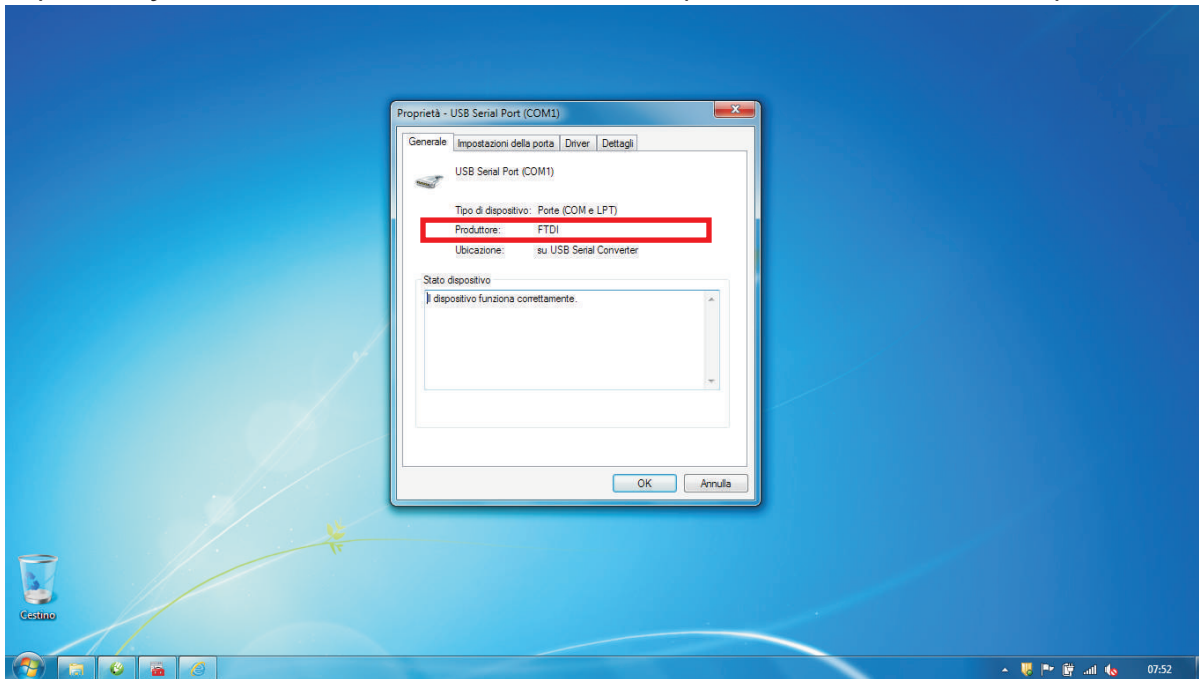
4) Verify what is the serial adapter installed



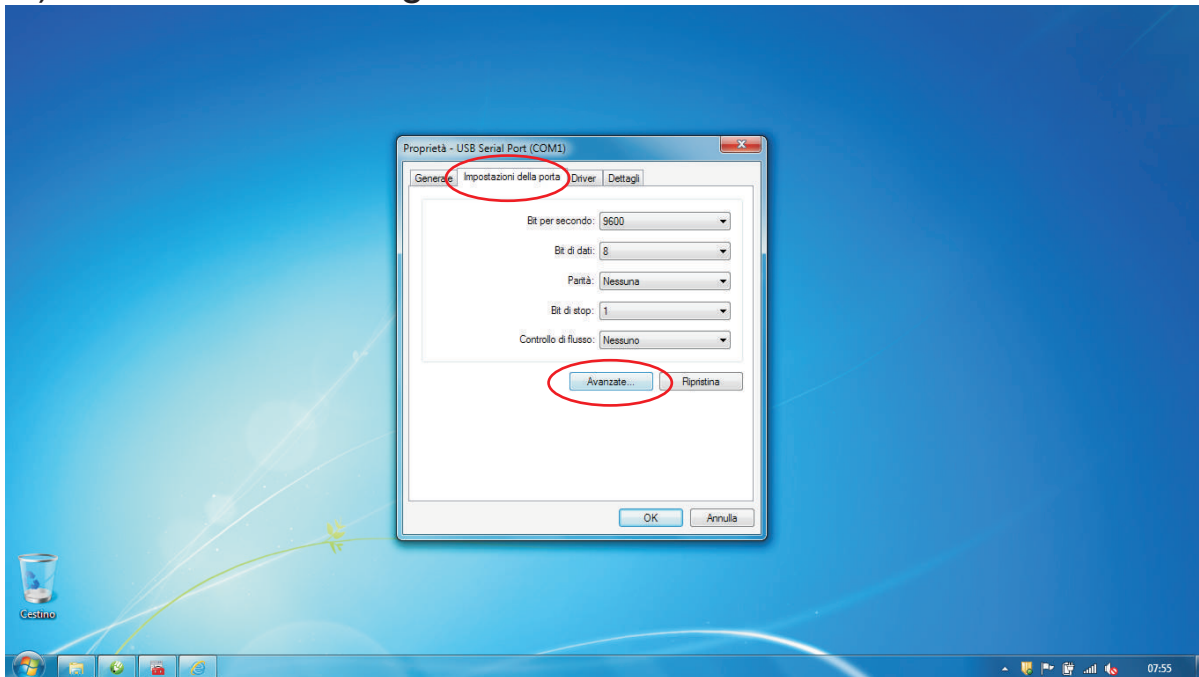
5) Click on right button of the mouse on propriety menu



6) Verify the name of the Producer (AEB - FTDI - ATEN)



7) Click on the settings Port Tab and afetr on the Advanced button



8) Verify that the number of the port is set from COM1 to COM10
Important : Verify that the latency time is set to 2mSec

